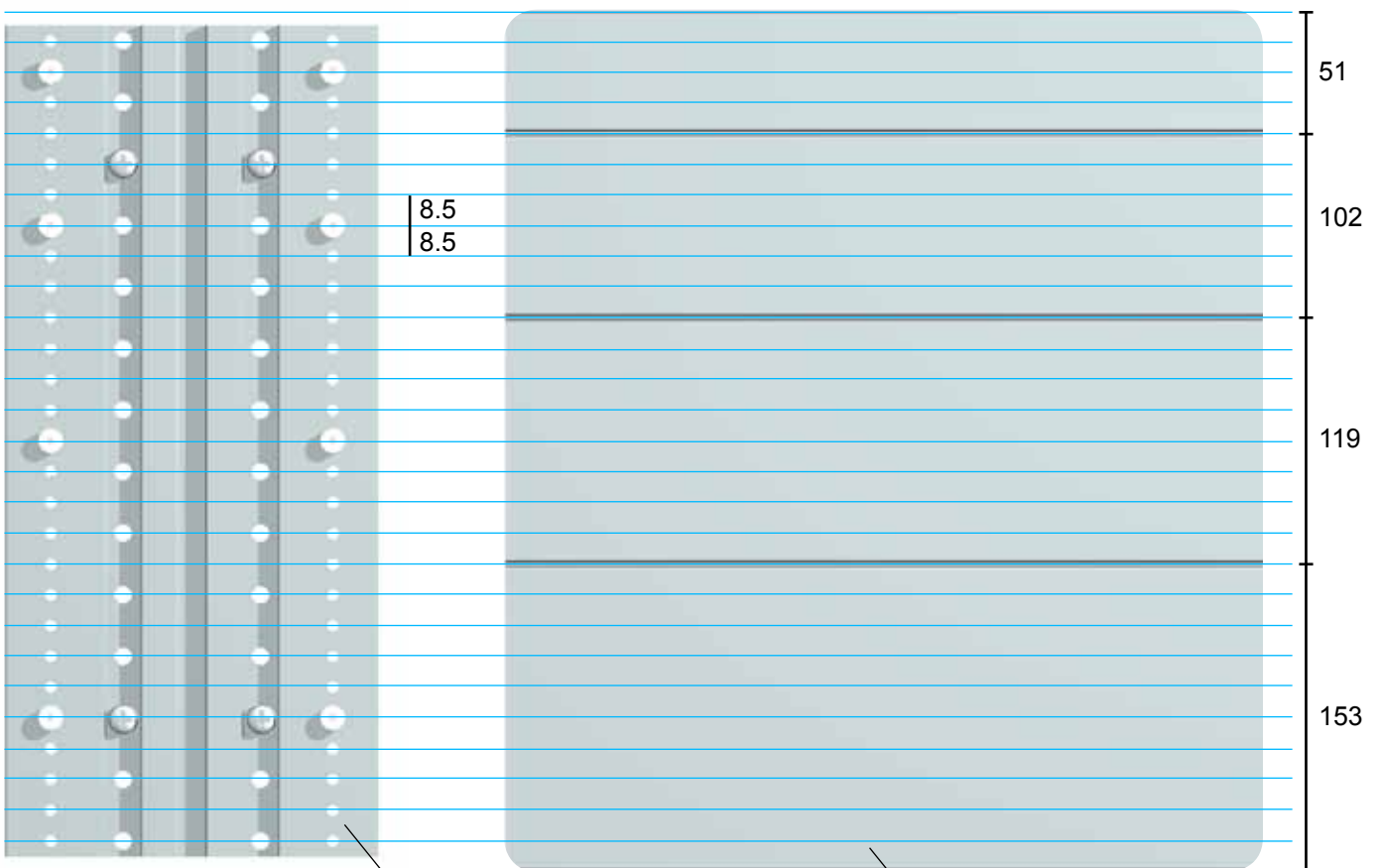


# GuideSign

## Mounting profile

The design of the GuideSign system is based on a modular dimension of 17 mm.



The graphic panels are mounted onto an aluminium profile. This mounting profile has two rows of pre-punched 5 mm Ø holes for wall mounting as well as two rows of 3 mm Ø holes for mounting of custom rivets to which the graphic panels are attached.

Hole spacing = 8.5 mm  
= 1/2 module

Graphic panels

Mounting profile

# GuideSign

## Manual 1

Wall-mounted signs in lengths of 125/165/225 and 312 mm

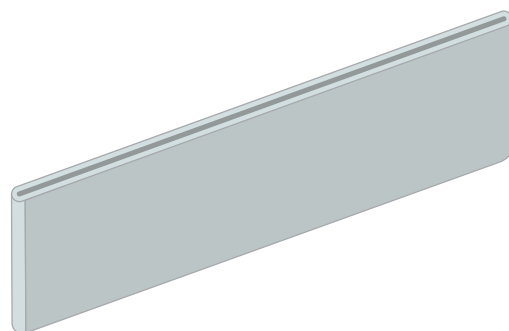
Mounting profiles for single signs and groups of signs are secured directly to the wall.

To find the height of the mounting profile:  
Total number of graphic panels in mm = total height minus at least 8 mm.

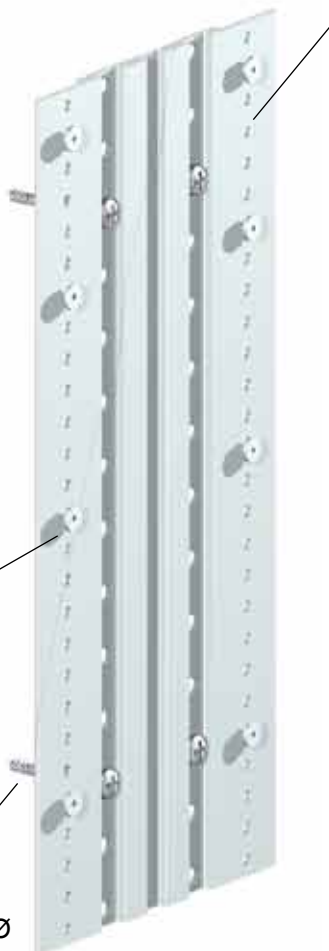
The mounting profile is installed onto the wall using screws that are screwed into the profile's 5 mm Ø holes in the mounting grooves.

Custom rivets are fastened to the profile at the horizontal centreline of each sign using the two outer rows of 3 mm Ø holes.

Screw in wall  
(Not supplied by DanSign)

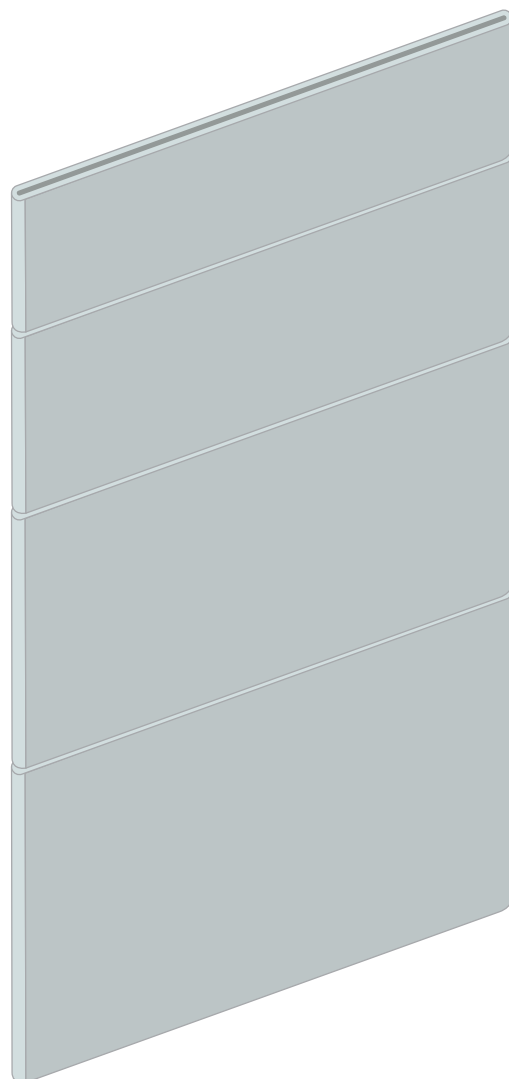


Mounting profile



2 custom rivets for the graphic panel, 3 mm Ø

Screw in groove for wall mounting, 5 mm Ø



# GuideSign

## Manual 2

Wall-mounted signs in lengths of 435/615 and 915 mm

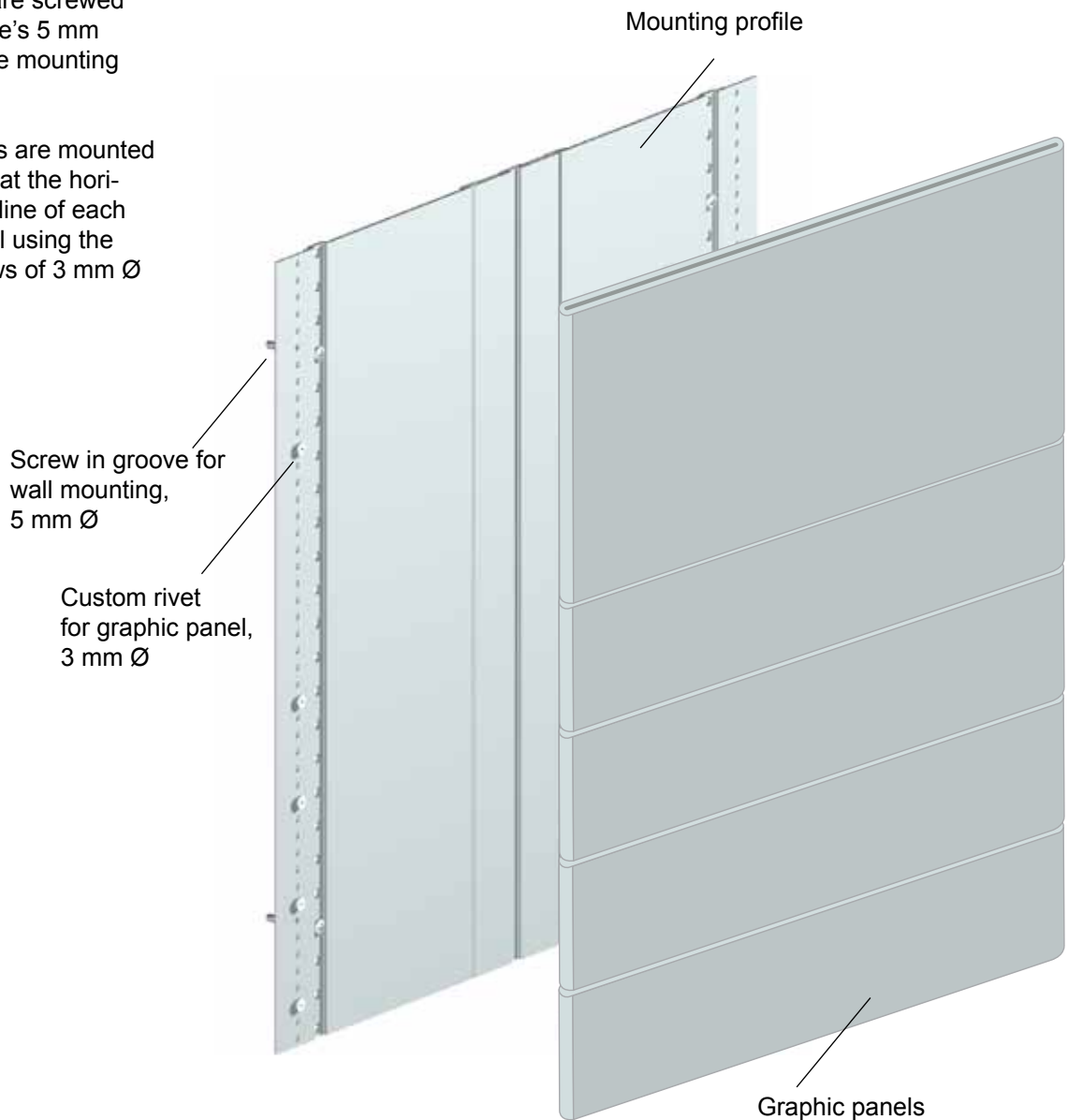
Larger mounting profiles are used for wider signs.

To find the height of the mounting profile:

Total number of graphic panels in mm = total height minus at least 8 mm.

The mounting profile is installed onto the wall using screws that are screwed into the profile's 5 mm  $\varnothing$  holes in the mounting grooves.

Custom rivets are mounted to the profile at the horizontal centreline of each graphic panel using the two outer rows of 3 mm  $\varnothing$  holes.



# GuideSign

## Manual 3

### Projecting signs

Projecting signs are mounted on a projected bracket.  
Projecting profiles are supplied in DanSign standard sizes:

165 x 153 mm  
225 x 51 mm  
225 x 204 mm

The projecting bracket is screwed onto the wall.

The riveted mounting profiles are slotted into the projecting profile's gable, the upper and the lower edges on both profile sets must be flush with each other. A pin is inserted through the mounting profiles and one of the corresponding holes in the projecting profile to attach the mounting profiles in height.

Finally, the graphic panels are mounted.

